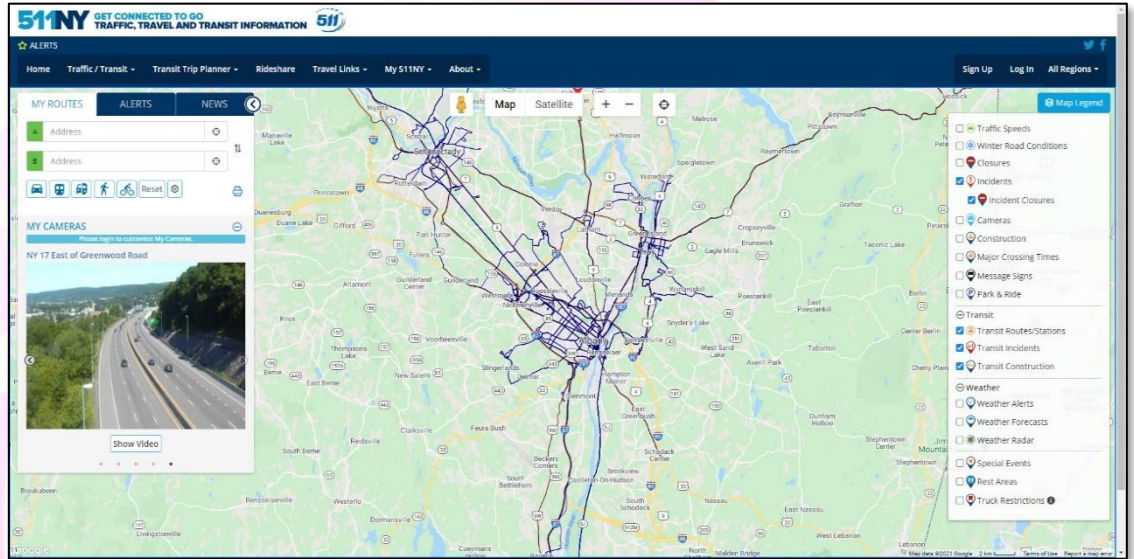




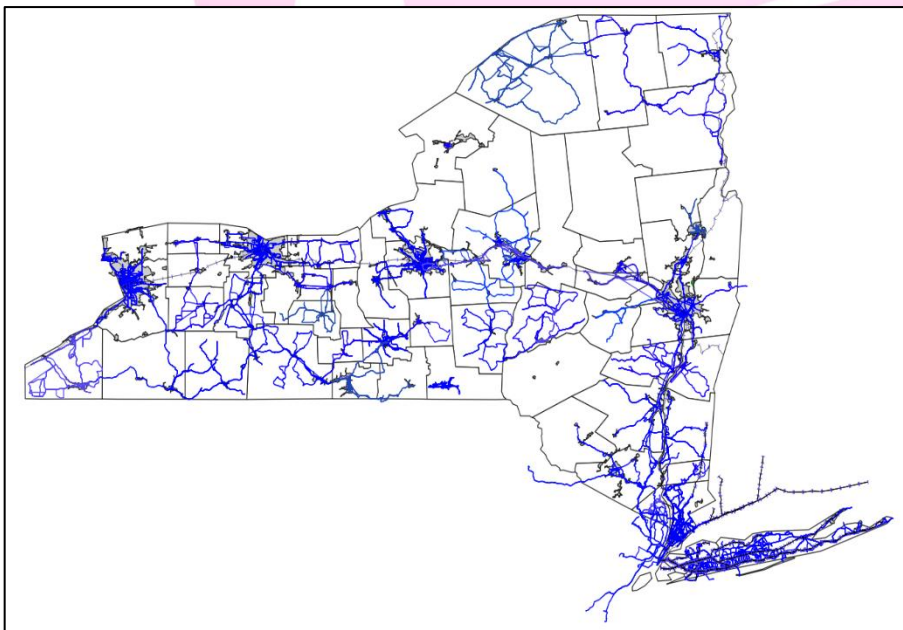
The 511NY Trip Planner Project

ConSysTec has been working with the New York State Department of Transportation (NYSDOT) and a third-party software developer on the 511NY Trip Planner initiative to assemble a statewide schedule information for all public transit agencies.

ConSysTec has responsibility for obtaining transit schedule data from approximately **100 transit agencies** throughout New York State, performing **quality control on the data** before submitting the data to the **511NY Trip Planner**.



511ny.org Trip Planner Page



NYSDOT Trip Planner Coverage

The coverage map to the left shows the available agency data, except for the MTA-NYCT Bus.

The schedule information allows commuters in New York State to plan intrastate trips using various mass transit options.

The transit data is formatted using the standard General Transit Feed Specification (GTFS) format before it is uploaded into the 511NY.org Trip Planner website.





The success of this initiative has been due to developing strong working relationships with each of the New York State transportation providers.

Public transportation providers fall into one of three categories, depending on the level of support required:

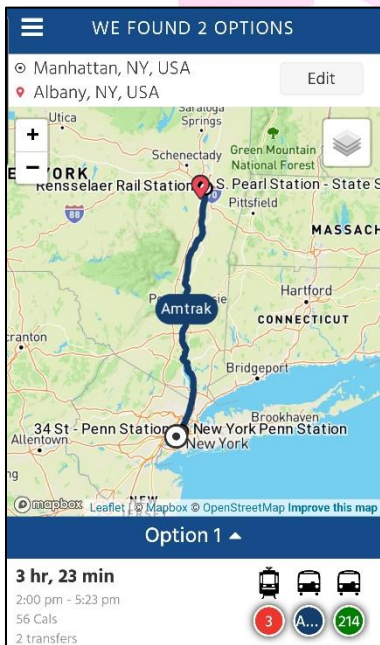
- **Category One:** Agencies generate their own GTFS files and make it Available.
- **Category Two:** Agencies receive training and technical support to use the 511NY Data Manager to create GTFS files.
- **Category Three:** The ConSysTec team creates and maintains GTFS files for agencies. ConSysTec's expertise in building relationships with public transportation providers is key to success.

```

stop_id,level_id,stop_name,stop_lat,stop_lon,location_type,parent_station
F12,,5 Av/53 St,40.760167,-73.975224,1,
E1,L0,5 Av/53 St SW,40.760474,-73.976099,2,F12
E2,L0,5 Av/53 St NE,40.76035,-73.97546,2,F12
E3,L0,5 Av/53 St SE,40.760212,-73.975512,2,F12
E4,L0,5 Madison/53 St NE,40.759612,-73.973731,2,F12
E5,L0,5 Madison/53 St SE,40.759491,-73.973820,2,F12
N1,L1,,40.760457,-73.975912,3,F12
N2,L1,,40.760531,-73.976111,3,F12
N3,L1,,40.759746,-73.974203,3,F12
N4,L1,,40.759679,-73.974064,3,F12
F12S,,5 Av/53 St,40.760167,-73.975224,0,F12
B1,L2,,40.759746,-73.974203,4,F12S
B3,L2,,40.759828,-73.974442,4,F12S
F12N,,5 Av/53 St,40.760167,-73.975224,0,F12
B2,L3,,40.760457,-73.975912,4,F12N
B4,L3,,40.760375,-73.975729,4,F12N
  
```

1, 0: station; 0, 1: platform; 2, 3: entrance/exit; 3, 4: generic node; 4, 5: boarding area

Sample GTFS Data



511ny.org mobile app

In addition, ConSysTec staff works closely with agencies to accomplish the following:

- Through training and technical support for transit agencies we convert schedule data that come in a wide variety of formats into GTFS.
- Act as a liaison with third party trip planners such as Google, Apple, Moovit, and Microsoft to refine the operator's data to allow their GTFS feeds to be compatible with third party trip planner applications.
- Act as a liaison between the individual operators and third party developers to make enhancements to the trip planner app, when possible, to help address issues based on the geographic requirements of the operator.

For more information about how ConSysTec can help your organization, visit us at www.consystec.com or scan the QR Code below.

